



HOPEWORKS  
a Housing Hope affiliate

# 2024

## IMPACT REPORT





## Dear Friends and Supporters,

As we reflect on the past year, I am filled with gratitude for the remarkable progress we've made together at Housing Hope and HopeWorks. Our mission—to empower individuals and families experiencing homelessness, poverty, and the barriers of systemic inequity—has never been more urgent, and our community has responded with unwavering compassion and resolve.

We expanded access to safe, stable housing, advanced our workforce development programs, and deepened our commitment. Through innovative partnerships and the tireless dedication of our staff, volunteers, and donors, we've helped hundreds of families move from crisis to stability.

Every number in this report tells a story—of resilience, transformation, and the power of community. But beyond the metrics, it's the human impact that defines our success. It's the mother who found a home for her children, the young adult who discovered their potential through job training, and the senior who now lives with dignity and support.

As we look ahead, we remain committed to bold action and compassionate service. Together, we are building a future where everyone has a place to call home and a path to thrive.

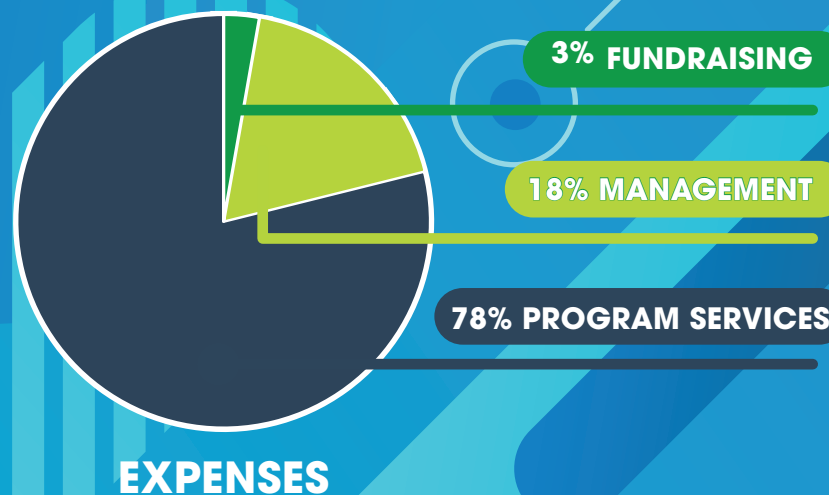
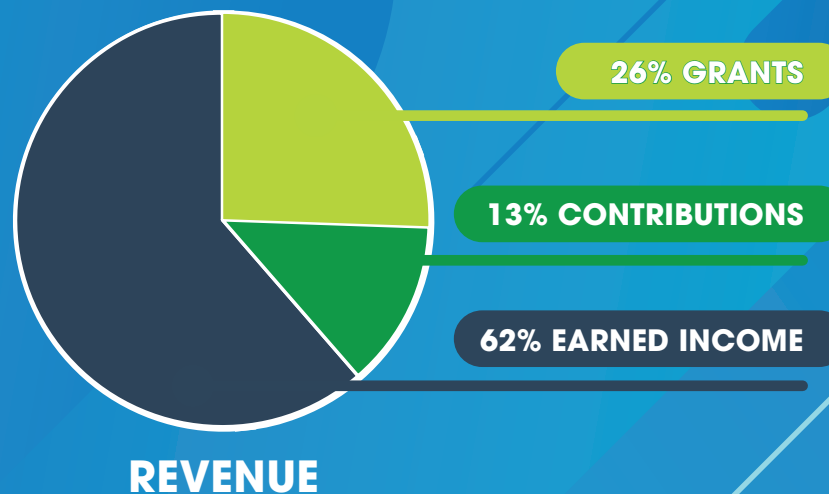
Thank you for walking alongside us.

Warmly,

*Kat Opina*

# 2023 - 2024 FINANCIAL OVERVIEW

Non-audited financials from FY2024.





# 2023 - 2024

## IMPACT IN NUMBERS

**93%** 

of our households maintained stable housing.

**70** 

children and parents moved from living on the streets to having safe housing in our Emergency Shelter.

**5,466** 

volunteer hours from 114 volunteers. The estimated value of this labor is \$117,296!

**120** 

people got on-the-job training in landscaping, retail, food service, admin and human services through HopeWorks.

**11** 

residents earned their GED, diploma, or High School Completion certificate.

**65%** 

of trainees were employed or in school after completing the HopeWorks Training program.

**195** 

children received services from Tomorrow's Hope Child Development Center, a HopeWorks social enterprise.

**79%** 

of children at Tomorrow's Hope (birth to age 5) showed improvement in social emotional development.

**1,007** 

intervention hours from Family Support Coaches who provided parenting and development support for 65 parents and 94 children.

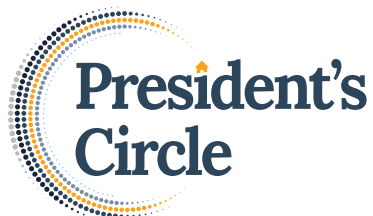


# WALK THE CHANGE WITH US

At Housing Hope, every contribution helps build pathways out of poverty and into stable futures. Your support fuels affordable housing, emergency shelter, and vital supportive services for more than 2,200 families across Snohomish County each year.

Explore the many different ways you can make a lasting impact.

[JOIN US ONLINE AT HOUSINGHOPE.ORG/DONATE](https://housinghope.org/donate)



President's Circle members give \$5,000+ annually, providing the foundation for long-term stability and growth.

Members enjoy exclusive gatherings, early insights, and stories from the families their generosity supports.



**\$5** | Provide a child with vital school supplies for their education.

## Pathbuilders

MONTHLY GIVING PROGRAM

Pathbuilders are our monthly donors. Steady supporters who create reliable funding for housing, shelter, and services all year long.

Have you ever wondered what even a \$5 monthly recurring donation provides for over 2,000 families and individuals experiencing homelessness across Snohomish County?

From school supplies to mental health therapy, every dollar raised helps cover vital services and programs for our most vulnerable neighbors.

## Have you Considered?



### PLANNED GIVING

Leave a legacy of hope with a future gift.

### WORKPLACE GIVING

Double your impact through employer matching.

### STOCK TRANSFERS

Support our mission with appreciated securities.

### IRA ROLLOVERS

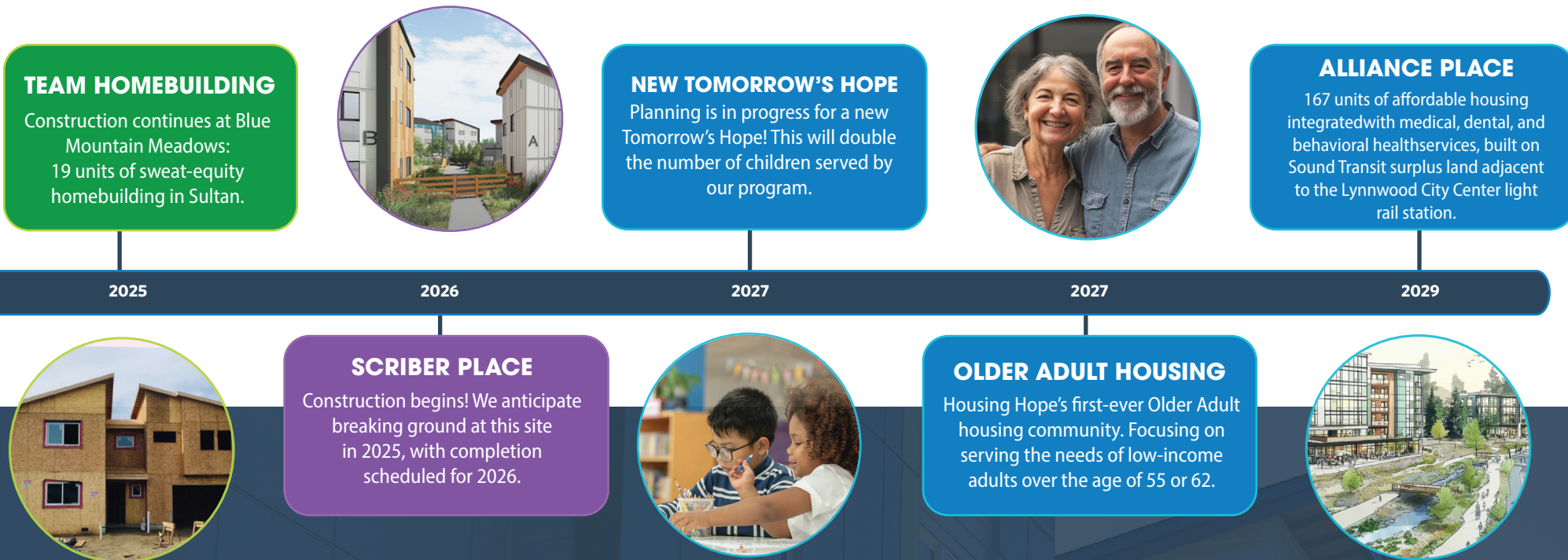
If you're 70½+, make a tax-free gift from your IRA.



# IN-PROGRESS & UPCOMING DEVELOPMENT PIPELINE

Over the next few years, we're accelerating our mission to pair safe, affordable homes with responsive social services. The development timeline below maps our path across several new communities. Each milestone represents more than construction: it's added stability for families, seniors, and neighbors, and an expanded network of on-site services that connect residents to health, education, and employment.

Staggered project phases ensure steady, responsible growth, sustaining quality while we deepen partnerships and center resident voice. Together, these steps chart how we turn commitment into keys-in-hand and impact that lasts.





# HOUSING HOPE

## MISSION

We shall promote and provide affordable housing and tailored services to reduce homelessness and poverty for residents of Snohomish County and Camano Island.

# HOPE WORKS JOB TRAINING

## MISSION

We create pathways to self-sufficiency through social enterprises that provide hope, empowerment, education and job training.

**RENEW**  
HOME & DECOR

**TOMORROW'S HOPE**  
CHILD DEVELOPMENT CENTER

**KINDRED**  
KITCHEN

# RESPECT

We listen deeply and value difference.

# INTEGRITY

We are honest and transparent, even when it is hard or uncomfortable.

# TRUST

We nurture positive relationships through honesty, psychological safety, and mutual respect.

# COMPASSION

We support and serve people because we all deserve to be whole, healthy, and happy.

# EMPATHY

We celebrate the whole person and recognize potential in everyone.

We are incredibly grateful for the individuals, businesses and foundations that provided operating support to Housing Hope and/or HopeWorks in 2024, including those featured below.

## \$25,000+ Partners

---

### PREMIER CORPORATE PARTNERS



### COMMUNITY PARTNERS

Edmonds Lutheran Church ELCA  
EverTrust Foundation  
Harvest Foundation  
Hazel Miller Foundation

Medina Foundation  
Northwest Children's Foundation  
The Whitehorse Foundation

## \$10,000+ Partners

---

### LEADERSHIP CORPORATE PARTNERS & COMMUNITY PARTNERS

Bob's Corn and Pumpkin Farm  
Coast Property Management  
Floyd and Delores Jones Foundation  
Gow Family Foundation  
Heritage Bank Everett  
LRCA Peterson Family Foundation  
Shelter Holdings LLC

Stanwood Redi-Mix Inc  
State Farm Safe Neighborhoods  
Stillaguamish Tribe of Indians  
UBS Financial Services Inc  
Veca Electric & Technologies  
Washington Association of Mortgage Professionals  
Washington Trust Bank Smokey Point

## Additional Supporters

---

### CHAMPION OF HOPE | \$5,000+ (CORPORATE & COMMUNITY)

Albertsons Companies Foundation  
Banner Bank  
Communication Resources NW LLC  
Crane Charitable Funds

Fred and Gretel Biel Charitable Trust  
Norstrom Cares  
Our Savior's Lutheran Church Everett  
Skotdal Real Estate

Skydive Snohomish Inc  
The Glaser Foundation  
Washington Federal Foundation  
Windermere Foundation

# Hope lives here.



(425) 347-6556 | [info@housinghope.org](mailto:info@housinghope.org) | 5830 Evergreen Way Everett, WA 98203 | [housinghope.org](http://housinghope.org)